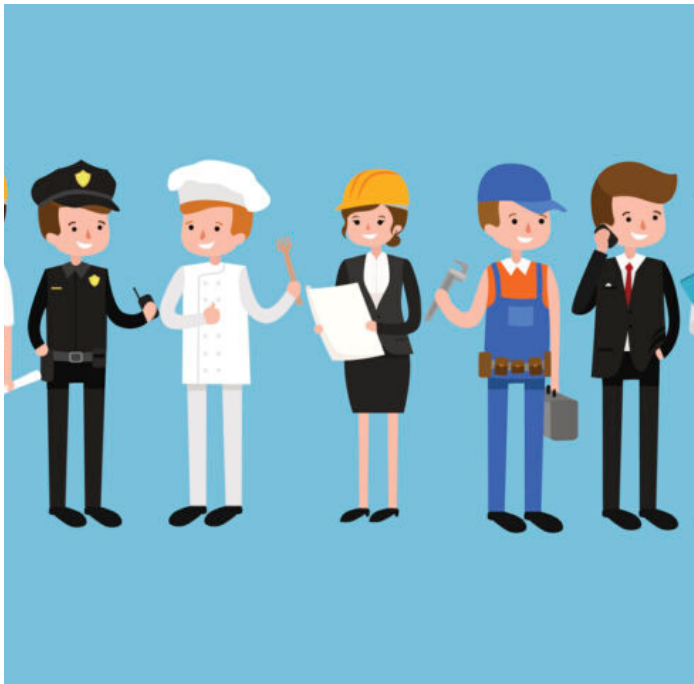


LOOK FORWARD TO A BRIGHT FUTURE!

MAPP ASSESSMENT

OVER 8 MILLION STUDENTS USED MAPP TO TAKE A CAREER DECISION



MAPP does the following:

Measures an individual's potential and motivations.

Describes temperament, aptitude and vocational interests.

Formats information in three ways:

1. Narrative
2. Numeric
3. Graphical

Why use MAPP Executive Assessment

Highly reliable tool at an affordable price.

With MAPP you can benchmark an individual's innate personality with over 1000 vocations.

No need for training/certification to understand MAPP results.



THE MOST COMPREHENSIVE CAREER TEST ONLINE

MOTIVATIONAL APPRAISAL PERSONAL POTENTIAL

IT IS PERFECT FOR STUDENTS, GRADUATES AND WORKING ADULTS

MAPP was developed in the US and is used by over 8 million people globally in over 55 countries. This powerful career aptitude test will take just over 22 minutes to complete. You'll get a wealth of information to help you find the right job that matches your unique career assessment.



MAPP focuses on motivation. MAPP does not determine whether you can or cannot perform in a job, rather indicates if you will perform. Motivation is what drives an individual from the inside. It cannot be learned or taught; this is just who you are. Therefore, our goal is to aid you in identifying your motivations and learning how to use them to be successful in your career and life plan.



The MAPP assessment also analyses beginners on “Worker traits” as they relate to potential job performance. The report is divided into nine categories, as follows:

1. **Interest in Job Contents** - This section identifies those tasks for which an employee is motivated to perform in a work environment.
2. **Temperament** - These are personal traits with a tendency to be displayed at work.
3. **Aptitude** - This section includes mental, perceptual, and sensory/physical factors that show how the mind and senses work together.
4. **People** - This section discusses roles, relationships, and priorities. These factors indicate how likely the employee will respond in a working relationship with others.
5. **Things** - How an employee relates to factors such as engineering, operations, and sensory/physical illustrate technical and craft potential.
6. **Data** - This section involves mental orientation and order of thinking. These factors cover the full range of thinking from theory to fact, thinking of doing.
7. **Reasoning** - These factors are designed to show how an employee reasons and where thinking is best applied.
8. **Mathematical** - This group of factors indicates interest level in applying the use of mathematics on the job.
9. **Language** - This section reports motivation and potential in the use of language and communication.



The MAPP test has undergone extensive validity and reliability testing by a number of psychologists, including correlating the results to the Strong Interest Inventory®. Reliability studies also indicate that the MAPP test is consistent over time.

More than 3,500 partners, including career counsellors, coaches, outplacement firms, University's and High Schools use the MAPP to gain insights and counsel their current and prospective employees and clients. However, the MAPP career test can be taken and read by consumers without having to engage the services of a professional.

After completing the test, you can see your results immediately. But you won't want to stop there! A MAPP Package can uniquely help you find your ideal career. Your personal test results are scored against over 1000 jobs, and you can see what jobs are the best fit, along with the education needed and career outlook.

Pay Here: <https://pages.razorpay.com/mapptest>

Adept Global is based in Mumbai since 2008 and is an authorised solution provider of the MAPP assessment tool.

**5.26, 91Springboard, Ackruti Trade Center, MIDC, Andheri E, Mumbai – 400093
www.adeptglobal.com | ryan@adeptglobal.com | +91 9820225892**